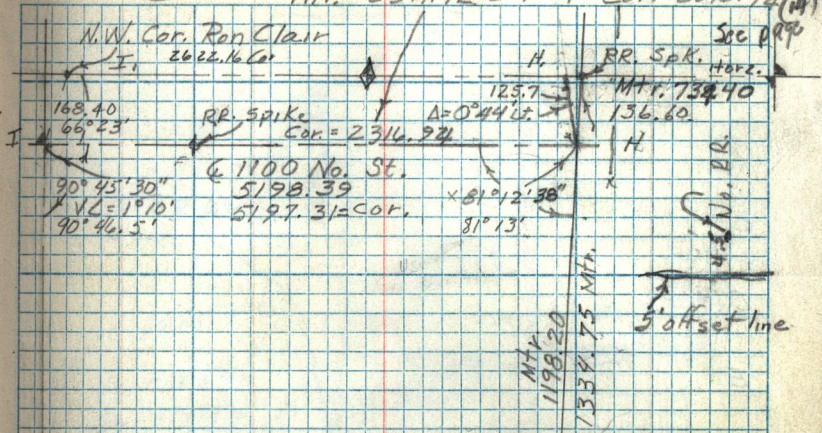


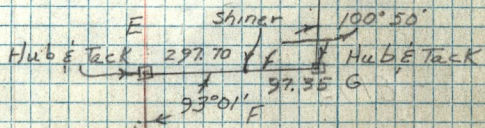
2640.83  
 2622.16  
17.84

MC-27-10

Vert. Mtr. = 2317.72 L. 1°29' Cor. = 2316.924 (M)



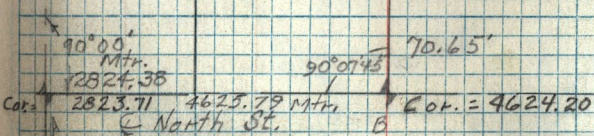
N 50° 15' E  
 386.49 Mtr.  
 Washington Blvd.



Quincy & Monroe

2398.26 Mtr.  
 257.73  
 Mtn. Road

D • Δ = 0°10' Lt.  
 C • Δ = 0°15' 07" Rt.



Vertical L = 1°15' to Monroe 1°30' to Jackson

See also Book 215-72

Note: 9.47' S. of No. RR. spk.